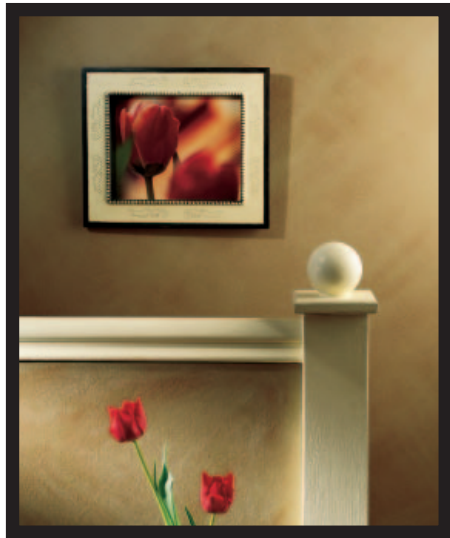




# Finely Grained Sand Tones



Muted colors and intriguing textures combine to create a look of sophistication for any decor. McCloskey® Sand Tones is a unique finish that features dark and light grains, re-creating a beautiful mountainside or golden beach. This is a look that is a natural for the den or family room. It also creates a calm, comfortable atmosphere for the bedroom and a welcoming mood in the entryway. Regardless of your decor, Sand Tones will complement your upholstery, carpet or accent pieces.

## MATERIALS CHECKLIST



1

1) McCloskey® Special Effects™ Sand Tones paint in desired color



4

4) Premium Quality 3" or 4" Nylon Paintbrush

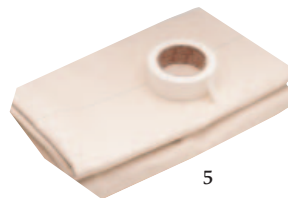
2) McCloskey® Clear Coat Satin Latex Protective Finish (if desired)

5) Painter's Tape & Drop Cloth



2

3) Paint Roller with 3/8" nap & Paint Tray



5

6) Practice Board

**Product Information Hotline:** To answer any faux finishing question, call our toll free Product Information Hotline: 1-800-345-4530 seven days a week, 8:00 AM to 5:00 PM. or contact us via email at [techsupport@valspar.com](mailto:techsupport@valspar.com).

McCloskey is a division of the Valspar Corporation.

**Decorator Options:** Paint all four walls of a room to create an overall mood. Or paint just one wall to accent a mirror, handsome mantel or favorite painting. Sand Tones is suitable for use on properly prepared wallboard, plaster, wood, masonry and brick. You will need to apply two coats— the first coat serves as the foundation while the second produces the gritty texture and finely grained appearance. Do not apply to heavily used surfaces such as trim, woodwork, doors or cabinets.

1

Apply first coat. Refer to step 1 of directions on reverse side. Remember, remove tape if you are not completing your project the same day.



2

Finish the application of the first coat by rolling the entire surface from ceiling to floor in one direction. This will create an even appearance without lap marks. Remove tape within an hour and allow to dry at least 4 hours, or overnight.

**NOTE:**  
See Sand Tones Label for more complete application instructions.

3

Reapply tape. Then apply the second coat, using the same method as for the first coat. You do not need to cut in around the edges this time. Always keep a wet edge between sections to prevent a banded appearance. Be sure to finish with long, even strokes from ceiling to floor. Use natural breaks such as the end of a wall, a doorway or window as stopping points. For high-traffic areas, brush or roll on McCloskey® Clear Coat when extra durability is desired. This top coat will darken the color of your Sand Tones selection slightly as it adds a subtle sheen.

